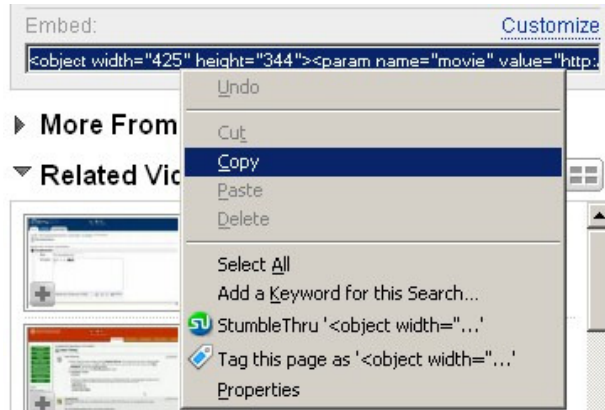


# Embedding YouTube Videos in Blackboard

## YouTube

1. Visit: [www.youtube.com](http://www.youtube.com)
2. Search for a video
3. Copy the embed code (in a box to the right of the video)



## Blackboard

**Note:** The Visual Text Box must be turned on before you can embed videos in Blackboard. For instructions on how to do that, visit: <http://courses.durhamtech.edu/wiki/images/6/68/Bb7TextEditor.pdf>

Go to the content area where you want to embed your video or create a new content area called Videos and create a new item.

A screenshot of the Blackboard 'Content Information' form. The form has a 'Name' field with the text 'How to Embed YouTube Videos in Bb', a 'Choose Color of Name' section, and a 'Text' editor. The 'Text' editor is in 'HTML Source Mode', showing the YouTube embed code. Annotations with arrows point to specific parts of the form: '1. Name your video' points to the 'Name' field; '2. Click the Toggle HTML Source Mode button' points to the '<>' button in the text editor's toolbar; '3. Paste YouTube embed code' points to the embed code in the text editor. A separate box on the left says 'Text box editor turned ON' with an arrow pointing to the text editor area.

**1 Content Information**

**Name**  1. Name your video

**Choose Color of Name**

**Text**

Text box editor turned ON

2. Click the **Toggle HTML Source Mode** button

3. Paste YouTube embed code

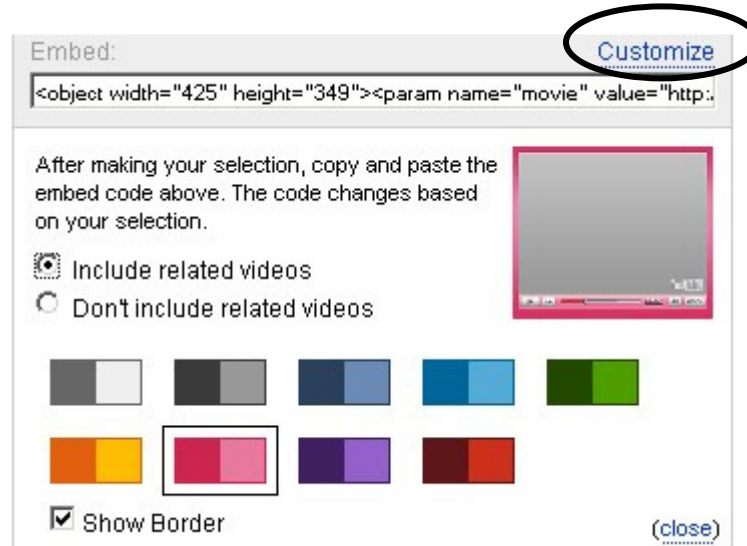
```
<div class="previewDiv" style="height: 344px; width: 425px;"><object height="344" width="425"><param value="http://www.youtube.com/v/LuFj4-zkqGI&hl=en&fs=1" name="movie" /><param value="true" name="allowFullScreen" /><embed height="344" width="425" allowfullscreen="true" type="application/x-shockwave-flash" src="http://www.youtube.com/v/LuFj4-zkqGI&hl=en&fs=1" /></object></div>
```

4. Click the **Toggle HTML Source Mode** button one more time
5. Click Submit!

## YouTube Advanced Settings

Before copying the YouTube embed code you can customize your settings.

- ✓ You can choose to include (or not include) related YouTube videos.
- ✓ You can choose to show a border around your video and choose a color scheme for the border.



The image shows the YouTube Advanced Settings dialog box. At the top, there is a text area labeled "Embed:" containing the code: `<object width="425" height="349"><param name="movie" value="http:..`. To the right of this text area is a button labeled "Customize" which is circled in black. Below the text area, there is a paragraph of text: "After making your selection, copy and paste the embed code above. The code changes based on your selection." Below this text are two radio buttons: "Include related videos" (which is selected) and "Don't include related videos". To the right of these radio buttons is a small video player thumbnail. Below the radio buttons are two rows of color swatches. The first row has five swatches: light gray, dark gray, blue-gray, blue, and green. The second row has four swatches: orange, pink (which is highlighted with a black border), purple, and red. At the bottom left, there is a checked checkbox labeled "Show Border". At the bottom right, there is a button labeled "(close)".