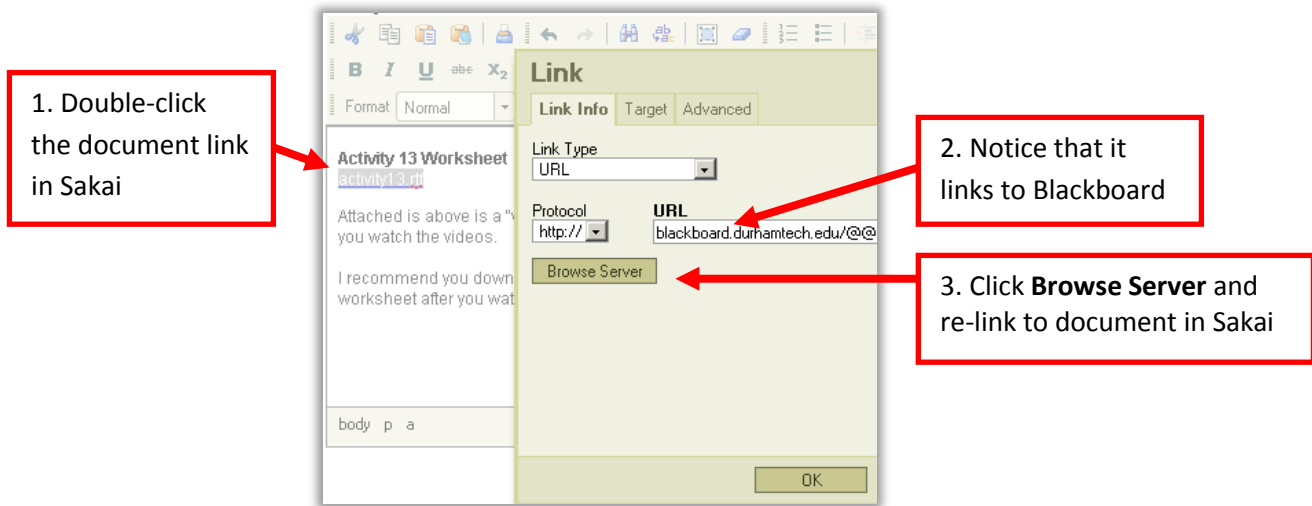


## Re-link Sakai Files and/or Images:

After copying content from Blackboard and pasting it into Sakai, you must re-link any images and/or document links to the correct files in Sakai.

### To re-link documents:

- In the **Sakai Text Editor**, locate any links to documents.
- Double-click the link to open the link dialog box.
- Click the **Browse Server** button.
- In the **Resource** area displayed at the top, click on the **folder** where your document is stored (if needed), and then click on the **file name**
- In the **Link** dialog box, click the **OK** button.
- The document link is now updated to point to the file in Sakai.



### To re-link images:

- In the **Sakai Text Editor**, double-click on any image.
- In the **Image Properties** dialog box, click the **Browse Server** button.
- In your **Resources** area displayed at the top, click on the folder where your image is located (such as Images), click on your image file name (such as laptopclipart.png).
- In the **Image Properties** dialog box, click **OK**.
- The image is now updated to point to the image file within Sakai.

